


# DOCUMENTARY HERITAGE AND AI



Software Heritage  
Symposium and Summit  
29 January 2025

# TABLE OF CONTENTS

01

*OVERVIEW*

02

*AI AS RECORD*

03

*PRESERVING AI*

04

*AI IN DOCUMENTARY  
HERITAGE*

05

*CONCLUSIONS*

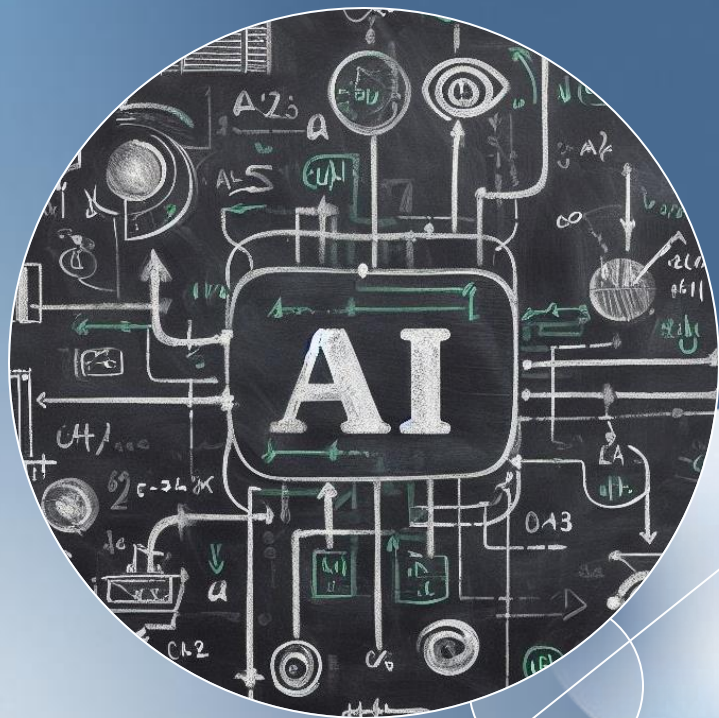


# OVERVIEW

## Documentary Heritage and AI: Approaches and Considerations-

- Provide practical approaches to documentary heritage organizations on using AI
- Considerations around policy framework, cooperation and ethics
- Focus today will be about AI as software to be preserved





02

AI AS  
RECORD

# AI AS RECORD

- Government and private industries are using AI to make decisions that affect people's lives

## DWP urged to reveal algorithm that 'targets' disabled for benefit fraud

Manchester group launches action after people with disabilities report high number of stressful checks for potential scams



📍 The Department for Work & Pensions has been asked to explain how artificial intelligence is being used to identify potential benefit fraudsters. Photograph: Andy Rain/EPA

## New AI tool counters health insurance denials decided by automated algorithms

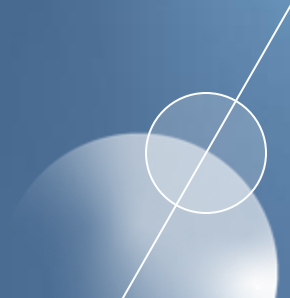
Class-action lawsuits allege algorithms turn down claims in seconds and critics say reform is needed for lasting change



📍 A general view outside the United Healthcare corporate headquarters on 4 December 2024 in Minnetonka, Minnesota. Photograph: Stephen Maturen/Getty Images

03

PRESERVING  
AI



# PRESERVING AI

- Given the important role that AI in policy decisions archivists will need to preserve AI and working with communities like the Software Heritage Network will become vital
  - What do we preserve?
  - How is it preserved? Are current digital preservation practices fit for purposes for the care, maintenance and accessibility of AI?
  - How sustainable is preserving AI?
- **Paradata and AI Preservation**
  - Capturing the tools, processes and people involved in AI development
    - Training data and tuning data
    - Logs, training parameters
    - Policies and procedures
    - Vendor data
  - Preserving all this information is challenging and the storage requirements demanding





04

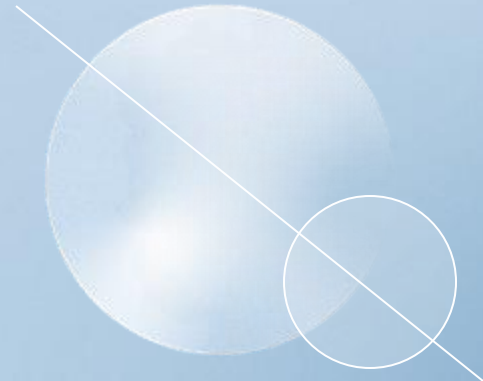
DOCUMENTARY  
HERITAGE AND AI





# DOCUMENTARY HERITAGE AND AI

- **Transparency and ethical parameters in the use of AI in Documentary Heritage**
  - Documentary heritage professionals are working in an ethical vacuum when it comes to how to use AI responsibility in our processes
    - UNESCO Recommendations on the Ethics of Artificial Intelligence only covers documentary heritage and access
    - International Council on Archives- ethical code not revised since the 1990s
    - International Federation of Library Associations- developing a framework for AI and library profession
- **Identification of documentary heritage**
  - Appraisal and Selection- what to keep, what to throw away
  - Sensitivity Review- what is open, open-redacted and closed
- **Access of documentary heritage**
  - Helping with large collections (i.e. photograph and a/v)
  - Mitigating bias and ensuring representation
- **Preservation of documentary heritage**



05

CONCLUSION



# THANKS!

## Do you have any questions?

Dr. Anthea Seles,  
Director and University Archivist,  
McGill University  
anthea.seles@mcgill.ca

**CREDITS:** This presentation template was created by [Slidesgo](#), and includes icons by [Flaticon](#), and infographics & images by [Freepik](#)

Please keep this slide for attribution